

A Compact Wireless
GPRS terminal for
Hospitality and Mobile
applications

Ingenico 7910

Mobile Range

- Ingenico introduces the i7910, a new GPRS long range wireless payment terminal ideal for both indoor and outdoor payment environments.
- Its ergonomic, compact design and light weight provide day-to-day convenience, robustness and comfort for mobile merchants.
- With its large backlit display, fast and easy loading printer, long magnetic stripe reader and intelligent Li Ion battery, performance is at the heart of i7910.
- Based on Ingenico's 32 bit architecture, the i7910 provides fast processing of powerful cryptographic algorithms.



GPRS
GENERAL
PACKET
RADIO
SERVICE



EMV
Fast transaction
time



GSM/GPRS
Pay wherever
you are!



UNICAPT
Application
compatibility



HSC 32 bits
Secure module



LiIon
Up to 200
transactions



Plug It
Modular
MMC slot
Backup Modem



PCI PED
Approved



i7910 - The optimal indoor wireless solution for hospitality and mobile applications



Pay@Door™
by Ingenico



Pay@Table™
by Ingenico

Ingenico 7910

With the i7910 Ingenico completes its comprehensive product offering to the hospitality, delivery and mobile merchants, delivering a new solution tailored to both indoor and outdoor environments.

All the ingredients for a great Wireless terminal!

Ingenico 7910 answers the requirements of the hospitality and mobile business sectors: **fast service, long life battery, convenience and flexibility.**

- With its GPRS capability, its **quiet and fast printer** (easy-loading mechanism) and its long card swipe for optimal reading, while speeding payment and customer service.
- The removable LiIon battery pack enables you to use i7910 for **up to 200 transactions**, giving you enough power to last a complete working day.
- In addition to the large backlit display, i7910 offers a **light, robust and ergonomic** solution to make the payment process **easy and efficient** for the users.
- In the event of GPRS network issues, the i7910 and its **LinkBox (V34 back up modem)** ensure **continuous operation**.

Ingenico 7910 can adapt to all kinds of applications. When extra memory is required to store data, it features an optional MMC/SD slot. If it needs to be linked to another device, Ingenico's LinkBox also provides a standard serial port.

Pay securely wherever you are!

Supporting Pay@Table and Pay@Door, **Ingenico 7910 GPRS** payment terminal enables you to **pay wherever you are** with all the security provided by Ingenico's High Security Core and UNICAPT™.

- The integrated High Security Core (HSC) has been developed from years of experience by Ingenico, the world leader in POS security. It offers different levels of security, meeting the most demanding requirements of payment transactions (PCI PED, ZKA...). It has a 32-bit processor to support powerful encryption (RSA, DES, 3DES...), thus ensuring confidential data is secure.
- Multi application security is provided by UNICAPT™ technology, permitting several applications to run independently on the same device. An additional benefit is the portability of previously written applications for Ingenico terminals.



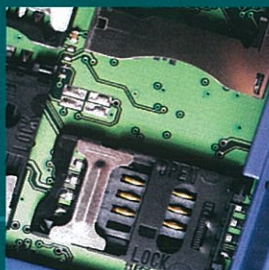
Optimal and secure card reading



Easy loading



Long life battery
Up to 200 transactions
Fast charge



Merchant card and MMC as options



Backup external modem (LinkBox)



Ergonomic and simple connectivity



Ingenico Inc.
6195 Shiloh Road, Suite D - Alpharetta, GA 30005
Tel: (678) 456-1200 - Fax: (678) 456-1201
www.ingenico-us.com

Ingenico Canada Ltd.
79 Torbarrie Road - Toronto, Ontario - Canada M3L 1G5
Tel: (416) 245-6700 - Fax: (416) 245-6701
www.ingenico.ca

Groupe Ingenico 192, avenue Charles de Gaulle - 92200 Neuilly sur Seine - France
Tel : 33 (0)1 46 25 82 00 - Fax : 33 (0)1 47 72 56 95 - www.ingenico.com

All rights reserved. This document is not binding and the specifications hereabove can be modified without prior consent.

| | |
|-----------------------------|---|
| Memory | 2Mb SRAM and 8Mb Flash Memory |
| Processor | ARM 32 bits |
| SAMs | Up to 2 SIMs + 1GSM SAM One full ISO format card and MMC (options) |
| Security | Integrated security. Ingenico's High Security Core PCI PED on-line/off-line |
| Communication module | GSM/GPRS 900/1800 MHz or 850/1900 MHz |
| Battery | Lilon for up to 200 transactions |
| Printer | Thermal, easy loading, 12lines/second Paper end detection, full graphics printing |
| Display | Graphic, 128 x 64 pixels. Backlit |
| Keypad | Backlit, 18 keys including 3 function keys |
| Magnetic card reader | ISO 1/2/3 (option JIS) |
| Smart card reader | EMV level 1 compliant. ISO 7816 1-1-3 Async/Sync. T=0 & T=1 |
| Connectivity | Via ComBox (2*RS232) |
| Communication | Via LinkBox (Synchronous and asynchronous modem v34) |
| Lens | Customizable with logo (option) PIN shroud add-on (option) |
| Environment | Operating temperature: +5°C to +40°C (41F to 104F) Storage temperature: -20°C to +70°C (-2F to 158F) |
| Dimension | 20.9 x 9.6 x 6 cm (8.2 x 3.77 x 2.36 in.) |
| Weight | 600 g (1.32 lb.) |